

SAN DIEGO STATE UNIVERSITY

School of Music and Dance

Jazz Studies Program

Scale Syllabus and Jury Requirements

For Brass and Woodwind Instruments, Piano, Guitar and Bass

(Bachelor of Music in Jazz Performance, Bachelor of Music General or Mus Ed.)

This syllabus represents the Jazz Studies Department applicable scale requirements for all students who were accepted and classified during and after the fall 1998 semester.

B. M. Jazz Studies--Semester I Jury

Freshman I (Semester 1)

- 1) Be Bop Major Mode
- 2) Be Bop Dorian
- 3) Be Bop Mixo Lydian
- 4) Minor Blues Mode

B. M. General or Mus. Ed.--Semester I Jury

Freshman I (Semester 1)

Same scales as B. M. Jazz Studies Majors throughout entire degree program.

B. M. Jazz Studies--Semester II Jury

Freshman II (Semester 2)

- 1) Jazz Melodic Minor Mode
- 2) Lydian Mode
- 3) Harmonic Minor Mode
- 4) Lydian Dominant Mode
- 5) Performance of *Freshman I modes*

B. M. General or Mus. Ed.--Semester II Jury

Freshman II (Semester 2)

[Be prepared to play Freshman I scales at this jury.]

B. M. Jazz Studies--Semester III Jury

Sophomore I (Semester 3)

- 1) Aeolian Mode
- 2) Symmetrical Dominant Mode
- 3) Locrian Mode
- 4) Lydian Augmented Mode
- 5) Performance of *Freshman I and II modes*
- 6) Performance of two tunes in contrasting styles, tempos and keys. One must be memorized. Consult with your private studio instructor. These pieces are not allowed for departmental recitals.
- 7) Departmental Recital--Performance of two tunes in contrasting styles, tempos and keys. One must be memorized. Refer to the Recital Requirements and consult with your private studio instructor. You must prepare two new pieces for the jury.

B. M. General or Mus. Ed.--Semester III Jury

Sophomore I (Semester 3)

[Be prepared to play Freshman I & II scales at this jury.]

B. M. Jazz Studies--Semester IV Jury*

Sophomore II (Semester 4)*

- 1) Phrygian Mode
- 2) Altered Dominant Mode
- 3) Whole Tone Scale
- 4) Locrian Mode with $\sharp 2^{\text{nd}}$ (a. k. a. Aeolian Mode with $\flat 5$)
- 5) Performance of two tunes in contrasting styles, tempos and keys. One must be memorized. Consult with your private studio instructor. These pieces are not allowed for departmental recitals.
- 6) Departmental Recital--Performance of two tunes in contrasting styles, tempos and keys. One must be memorized. Refer to the Recital Requirements and consult with your private studio instructor. You must prepare two new pieces for the jury.

B. M. General or Mus. Ed.--Semester IV Jury

Sophomore II (Semester 4)

[Comprehensive testing on all previous scales.]

*** THIS IS THE JUNIOR LEVEL JURY. BE PREPARED FOR A COMPREHENSIVE REVIEW OF ALL THE PREVIOUSLY TESTED MODES AND SCALES. THIS JURY DETERMINES WHETHER OR NOT YOU WILL CONTINUE AS A B.M. JAZZ STUDIES MAJOR AND GO ON TO YOUR JUNIOR AND SENIOR RECITALS.**

Jury Procedure Information cont.,

Scale and Modes

At each jury you will be expected to play the assigned modes and scales in all keys. When playing the modes and scales, they must be played at a steady tempo.

The minimum required tempo allowed is ♩ = 120 in eighth notes.

You are free to play at faster tempos if you wish, but remember, all scales must be played at a consistent tempo.

SPECIFIC INSTRUMENT REQUIREMENTS IN REGARDS TO MODES AND SCALES

Piano--All modes and scales are to be played hands together in parallel motion, two octaves.

Guitar--All modes and scales are to be played two octaves. Be prepared to play in at least two different positions if asked.

Electric Bass--All modes and scales are to be played two octaves. Be prepared to play in at least two different positions if asked.

String Bass--All modes and scales are to be played in two octaves, with the following exception. If the student is an electric bass player learning the string bass, scales in one octave are allowable for freshman 1 and 2 juries, and the sophomore 3 and 4 juries. Starting at jury 5 and continuing through juries 6 and 7 the student will be expected to play scales in two octaves.

Brass and Woodwinds--Given instrument range considerations, two octaves will be required. At the point where two octaves are beyond an instrument's range, an octave and a half will be required.

Repertoire

Jazz faculty will accompany you on your selected repertoire. They know many tunes, but have lead sheets or chord sheets available for each piece. Your selections must be in contrasting styles, tempos and keys. One must be memorized and the other can be read. Remember, these pieces must be different from those performed at your departmental recital.

School of Music and Dance

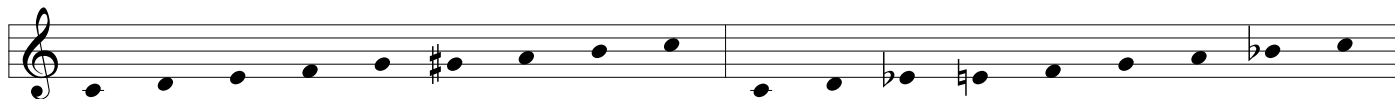
Jazz Studies Program

Scale Syllabus--Woodwinds, Brass, Vibraphone, Violin, Viola

B. M. Jazz Studies--Semester I Jury/B. M. General or Mus. Ed.--Semester V Jury
Freshman I *Junior I*

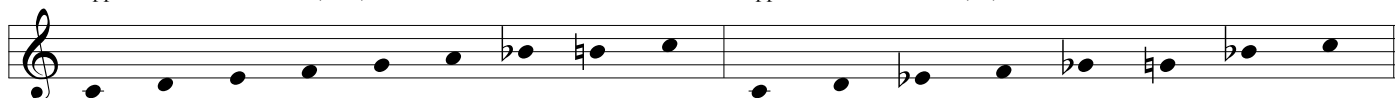
Be Bop Major Mode
Application Ma7

Be Bop Dorian Mode
Application mi7 or mi6,9



Be Bop Mixo Lydian Mode
Application dom7 or dom7(sus4)

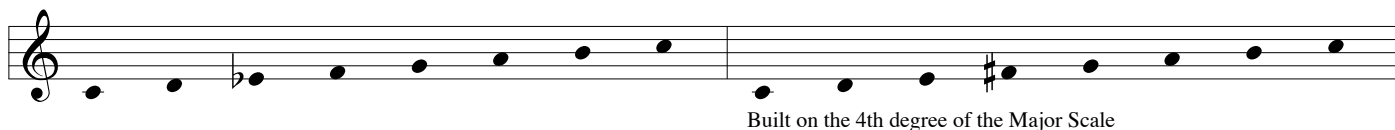
Minor Blues Mode
Application mi7 or dom7(+9)



B. M. Jazz Studies--Semester II Jury/B. M. General or Mus. Ed.--Semester VI Jury*
Freshman II *Junior II*

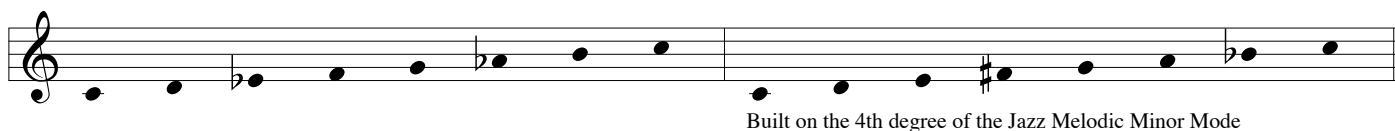
Jazz Melodic Minor Mode
Application mi(Ma7) or mi6,9

Lydian Mode
Application Ma7 or Ma7(-5)



Harmonic Minor Mode
Application mi(Ma7) as well as iimi7(-5) & V7(-9) of the Tonic Scale

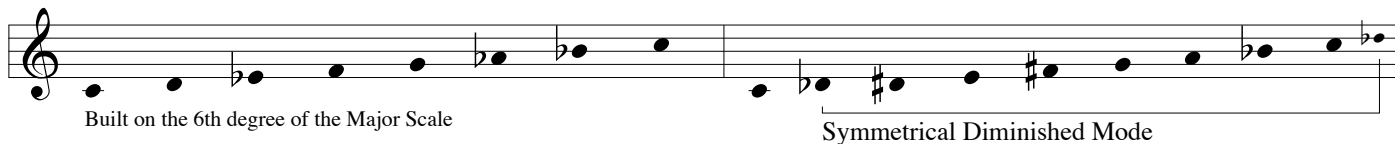
Lydian Dominant Mode
Application dom7 or dom7(-5)



B. M. Jazz Studies--Semester III Jury/B. M. General or Mus. Ed.--Semester VII Jury*
Sophomore I *Senior I*

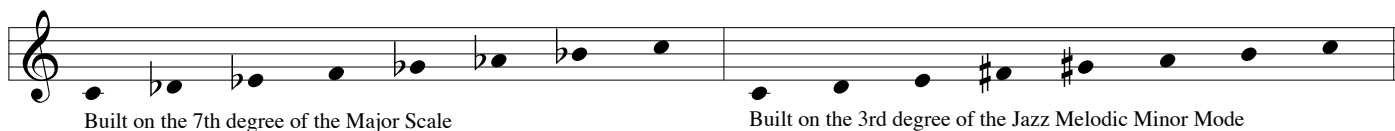
Aeolian Mode
Application mi7 acting as vimi7 or mi7(+5)

Symmetrical Dominant Mode
Application dom7, dom7(-5), dom7(-9) dom13(-9), dom7(+9)



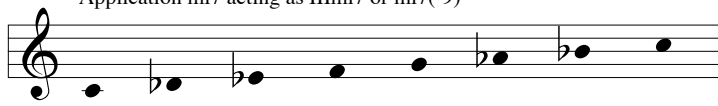

Locrian Mode
Application mi7(-5)

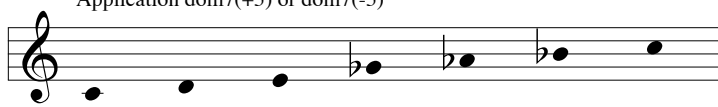

Lydian Augmented Mode
Application Ma7(+5), Ma7(+4,+5)



B. M. Jazz Studies--Semester IV Jury**/B. M. General or Mus. Ed.--Semester VIII Jury*
Sophomore II *Senior II*

****Remember, for the B. M. Jazz Major this the Junior Level Jury.**

<p>Phrygian Mode Application mi7 acting as iii mi7 or mi7(-9)</p>  <p>Built on the 3rd degree of the Major Scale</p>	<p>Altered Dominant Mode Application dom7(+5,-9 or +9)</p>  <p>Built on the leading tone of the Jazz Melodic Minor Mode</p>
--	---

<p>Whole Tone Scale Application dom7(+5) or dom7(-5)</p> 	<p>Locrian #2 Mode (a. k. a. Aeolian b5) Application mi7(-5) or mi9(-5)</p>  <p>Built on the 6th degree of the Jazz Melodic Minor Mode</p>
---	--

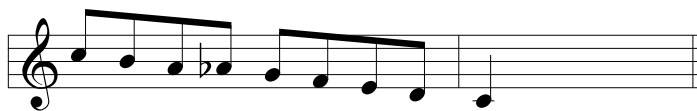
*** The jury committee will expect you to be prepared to play all of the scales and modes from preceeding jury requirements. Stay current on all required scales and modes!!**

Manner in which Modes and Scales are to be played

Please refer to page 3 of this Syllabus starting at JURY PROCEDURE INFORMATION for instrument specific directions.



Two Octaves



Scales and modes with 8 non repeating notes in the octave will end on beat 1. Scales and modes with 7 non repeating notes in the octave will end on beat 3.



Octave and 5th

- Note: For the Symmetrical Dominant Mode to end on a strong downbeat within the octave and 5th pattern, play the mode only up to its +11 in the second octave.
- Note: For the Altered Dominant Mode to end on a strong downbeat within the octave and 5th pattern, play the mode up to its +5 (or -6).